



Test Report No. 5896425

Date : 24-May-2024

Page 1 of 11

Client : Proterial Thai Enamel Wire Co.,Ltd
171 Moo 12, Bangna-Trad Rd.,
Tambol Bangwua, Amphur Bangpakong Chachoengsao 24180 Thailand

The following sample(s) was/were submitted and identified by client as:

Sample Name : Self-lubricant polyester
For Part No. : PEW-E, XXXXXXXXXX
Country of Origin : Thailand

The following sample(s) was/were identified by SGS as:

SGS Sample No. : 6205328
Sample Condition : As per attached photograph.
Quantity Submitted : 1 roll
Sample Receiving Date : 17-May-2024
Testing Period : 17-May-2024 to 24-May-2024

Signed for and on behalf of
SGS (Thailand) Ltd.

Anchalee Wunnaphuek
Acting - RSTS Lab Manager



"Any holder of this document is advised that should client or third party information be supplied with respect to the goods or sample, SGS may, at its discretion, attached or indicate such information to the report but SGS makes no warranties or accepts no liable for the veracity or lack thereof of such Information."

?This document is issued by the Company subject to its General Conditions of Service printed overleaf, available on request or accessible at <http://www.sgs.com/en/Terms-and-Conditions.aspx> and, for electronic format documents, subject to Terms and Conditions for Electronic Documents at <http://www.sgs.com/en/Terms-and-Conditions/Terms-e-Document.aspx>

Attention is drawn to the limitation of liability, indemnification and jurisdiction issues defined therein. Any holder of this document is advised that information contained hereon reflects the Company's findings at the time of its intervention only and within the limits of Client's instructions, if any. The Company's sole responsibility is to its Client and this document does not exonerate parties to a transaction from exercising all their rights and obligations under the transaction documents. This document cannot be reproduced except in full, without prior written approval of the Company. Any unauthorized alteration, forgery or falsification of the content or appearance of this document is unlawful and offenders may be prosecuted to the fullest extent of the law.?

Unless otherwise stated the results shown in this test report refer only to the sample(s) received and such sample(s) are retained for 30 days only.

5598138



Test Report No. 5896425 **Date :** 24-May-2024 **Page 2 of 11**

Test Requested : In accordance with the EU RoHS Directive 2011/65/EU (Annex II) [amended by Directive (EU) 2015/863] .Selected test (s) as requested by client.

Test Method : (1) IEC 62321-5 edition 1.0 : 2013 for Lead content, Analyzed by ICP-OES.
(2) IEC 62321-5 edition 1.0 : 2013 for Cadmium content, Analyzed by ICP-OES.
(3) IEC 62321-4 ,edition 1.1 : 2017 for Mercury Content, Analyzed by ICP-OES.
(4) IEC 62321-7-1 edition 1.0 : 2015 for Hexavalent Chromium Content,Analyzed by UV/Vis Spectrometry.
(5) IEC 62321-6 edition 1.0 : 2015 for PBBs/PBDEs content, Analyzed by GC/MS.
(6) IEC 62321-8 edition 1.0 : 2017 for Phthalates content,Analyzed was performed by GC/MS.

Test Results : Please refer to next page.

CONCLUSION

Based on the performed tests on submitted sample(s),the results of Cadmium (Cd),Lead (Pb),Mercury (Hg),Hexavalent chromium (Cr-VI),Polybrominated biphenyls (PBBs),Polybrominated diphenyl ethers (PBDEs) and Phthalates such as Bis(2-ethylhexyl) phthalate (DEHP),Butyl benzyl phthalate (BBP),Dibutyl phthalate (DBP) and Diisobutyl phthalate (DIBP) comply with the limits as set by RoHS Directive (EU) 2015/863 amending Annex II to Directive 2011/65/EU where the decision rules based on simple acceptance which the probability of false accept may be as high as 50% in case the results is exactly on the tolerance limit.

"Any holder of this document is advised that should client or third party information be supplied with respect to the goods or sample, SGS may, at its discretion, attached or indicate such information to the report but SGS makes no warranties or accepts no liable for the veracity or lack thereof of such Information."

?This document is issued by the Company subject to its General Conditions of Service printed overleaf, available on request or accessible at <http://www.sgs.com/en/Terms-and-Conditions.aspx> and, for electronic format documents, subject to Terms and Conditions for Electronic Documents at <http://www.sgs.com/en/Terms-and-Conditions/Terms-e-Document.aspx>

Attention is drawn to the limitation of liability, indemnification and jurisdiction issues defined therein. Any holder of this document is advised that information contained hereon reflects the Company's findings at the time of its intervention only and within the limits of Client's instructions, if any. The Company's sole responsibility is to its Client and this document does not exonerate parties to a transaction from exercising all their rights and obligations under the transaction documents. This document cannot be reproduced except in full, without prior written approval of the Company. Any unauthorized alteration, forgery or falsification of the content or appearance of this document is unlawful and offenders may be prosecuted to the fullest extent of the law.?

Unless otherwise stated the results shown in this test report refer only to the sample(s) received and such sample(s) are retained for 30 days only.

5598138



Test Report No. 5896425

Date : 24-May-2024

Page 3 of 11

TEST RESULTS

Test results by chemical method (Unit: mg/kg)

| Test Item (s): | Method (Refer to) | Result (1) | MDL | RoHS Limit |
|--|-------------------|------------|------|------------|
| Lead (Pb) | (1) | n.d. | 2 | 1000 |
| Cadmium (Cd) | (2) | n.d. | 2 | 100 |
| Mercury (Hg) | (3) | n.d. | 2 | 1000 |
| Hexavalent Chromium (CrVI) by boiling water extraction # (Unit : (ug/cm2)) | (4) | n.d. | 0.10 | - |

Test Part Description
Result (1) metal with plating

Note :

(a) mg/kg = ppm ; 0.1wt% = 1000 ppm

(b) ug/cm2 = microgram/centremeter square

(c) n.d. = Not Detected

(d) MDL = Method Detection Limit

(e) # = a. The sample is positive for CrVI if the CrVI concentration is greater than 0.13 ug/cm2. The sample coating is considered to contain CrVI

b. The sample is negative for CrVI if CrVI is n.d. (concentration less than 0.10 ug/cm2). The coating is considered a non-CrVI based coating

c. The result between 0.10 ug/cm2 and 0.13 ug/cm2 is considered to be inconclusive - unavoidable coating variations may influence the determination

(f) "-" = Not regulated

(g) For corrosion protection coatings on metals: Information on storage conditions and production date of the tested sample is unavailable and thus results of Cr(VI) represent status of the sample at the time of testing represent status of the sample at the time of testing.

"Any holder of this document is advised that should client or third party information be supplied with respect to the goods or sample, SGS may, at its discretion, attached or indicate such information to the report but SGS makes no warranties or accepts no liable for the veracity or lack thereof of such Information."

?This document is issued by the Company subject to its General Conditions of Service printed overleaf, available on request or accessible at <http://www.sgs.com/en/Terms-and-Conditions.aspx> and, for electronic format documents, subject to Terms and Conditions for Electronic Documents at <http://www.sgs.com/en/Terms-and-Conditions/Terms-e-Documents.aspx>

Attention is drawn to the limitation of liability, indemnification and jurisdiction issues defined therein. Any holder of this document is advised that information contained hereon reflects the Company's findings at the time of its intervention only and within the limits of Client's instructions, if any. The Company's sole responsibility is to its Client and this document does not exonerate parties to a transaction from exercising all their rights and obligations under the transaction documents. This document cannot be reproduced except in full, without prior written approval of the Company. Any unauthorized alteration, forgery or falsification of the content or appearance of this document is unlawful and offenders may be prosecuted to the fullest extent of the law.?

Unless otherwise stated the results shown in this test report refer only to the sample(s) received and such sample(s) are retained for 30 days only.

5598138

SGS (Thailand) Limited

Laboratory Services 700/693 Moo 7 Don Hua Roh Muang Chonburi Chonburi 20000
t +66 (0)33 266 165 f +66 (0)33 266 166 www.sgs.com

Member of the SGS Group



Test Report No. 5896425

Date : 24-May-2024

Page 4 of 11

TEST RESULTS

Test results by chemical method (Unit: mg/kg)

| Test Item (s): | Method (Refer to) | Result (1) | MDL | RoHS Limit |
|--------------------------------|-------------------|------------|-----|------------|
| Polybrominated biphenyls (PBB) | (5)* | n.d. | - | 1000 |
| Monobromobiphenyl | | n.d. | 5 | - |
| Dibromobiphenyl | | n.d. | 5 | - |
| Tribromobiphenyl | | n.d. | 5 | - |
| Tetrabromobiphenyl | | n.d. | 5 | - |
| Pentabromobiphenyl | | n.d. | 5 | - |
| Hexabromobiphenyl | | n.d. | 5 | - |
| Heptabromobiphenyl | | n.d. | 5 | - |
| Octabromobiphenyl | | n.d. | 5 | - |
| Nonabromobiphenyl | | n.d. | 5 | - |
| Decabromobiphenyl | | n.d. | 5 | - |

"Any holder of this document is advised that should client or third party information be supplied with respect to the goods or sample, SGS may, at its discretion, attached or indicate such information to the report but SGS makes no warranties or accepts no liable for the veracity or lack thereof of such Information."

?This document is issued by the Company subject to its General Conditions of Service printed overleaf, available on request or accessible at <http://www.sgs.com/en/Terms-and-Conditions.aspx> and, for electronic format documents, subject to Terms and Conditions for Electronic Documents at <http://www.sgs.com/en/Terms-and-Conditions/Terms-e-Document.aspx>

Attention is drawn to the limitation of liability, indemnification and jurisdiction issues defined therein. Any holder of this document is advised that information contained hereon reflects the Company's findings at the time of its intervention only and within the limits of Client's instructions, if any. The Company's sole responsibility is to its Client and this document does not exonerate parties to a transaction from exercising all their rights and obligations under the transaction documents. This document cannot be reproduced except in full, without prior written approval of the Company. Any unauthorized alteration, forgery or falsification of the content or appearance of this document is unlawful and offenders may be prosecuted to the fullest extent of the law.?

Unless otherwise stated the results shown in this test report refer only to the sample(s) received and such sample(s) are retained for 30 days only.

5598138



Test Report No. 5896425

Date : 24-May-2024

Page 5 of 11

TEST RESULTS

Test results by chemical method (Unit: mg/kg)

| Test Item (s): | Method (Refer to) | Result (1) | MDL | RoHS Limit |
|---------------------------------------|-------------------|------------|-----|------------|
| Polybrominated diphenyl ethers (PBDE) | (5)* | n.d. | - | 1000 |
| Monobromodiphenyl ether | | n.d. | 5 | - |
| Dibromodiphenyl ether | | n.d. | 5 | - |
| Tribromodiphenyl ether | | n.d. | 5 | - |
| Tetrabromodiphenyl ether | | n.d. | 5 | - |
| Pentabromodiphenyl ether | | n.d. | 5 | - |
| Hexabromodiphenyl ether | | n.d. | 5 | - |
| Heptabromodiphenyl ether | | n.d. | 5 | - |
| Octabromodiphenyl ether | | n.d. | 5 | - |
| Nonabromodiphenyl ether | | n.d. | 5 | - |
| Decabromodiphenyl ether | | n.d. | 5 | - |

Test Part Description

Result (1) metal with plating

Note :

(a) mg/kg = ppm ; 0.1 wt% = 1000 ppm

(b) n.d. = Not Detected

(c) MDL = Method Detection Limit

(d) "-" = Not regulated

(e) Test done on client submitted sample

"Any holder of this document is advised that should client or third party information be supplied with respect to the goods or sample, SGS may, at its discretion, attached or indicate such information to the report but SGS makes no warranties or accepts no liability for the veracity or lack thereof of such Information."

?This document is issued by the Company subject to its General Conditions of Service printed overleaf, available on request or accessible at <http://www.sgs.com/en/Terms-and-Conditions.aspx> and, for electronic format documents, subject to Terms and Conditions for Electronic Documents at <http://www.sgs.com/en/Terms-and-Conditions/Terms-e-Document.aspx>

Attention is drawn to the limitation of liability, indemnification and jurisdiction issues defined therein. Any holder of this document is advised that information contained hereon reflects the Company's findings at the time of its intervention only and within the limits of Client's instructions, if any. The Company's sole responsibility is to its Client and this document does not exonerate parties to a transaction from exercising all their rights and obligations under the transaction documents. This document cannot be reproduced except in full, without prior written approval of the Company. Any unauthorized alteration, forgery or falsification of the content or appearance of this document is unlawful and offenders may be prosecuted to the fullest extent of the law.?

Unless otherwise stated the results shown in this test report refer only to the sample(s) received and such sample(s) are retained for 30 days only.

5598138

SGS (Thailand) Limited

Laboratory Services 700/693 Moo 7 Don Hua Roh Muang Chonburi Chonburi 20000
t +66 (0)33 266 165 f +66 (0)33 266 166 www.sgs.com

Member of the SGS Group



Test Report No. 5896425

Date : 24-May-2024

Page 6 of 11

TEST RESULTS

Phthalates Content for RoHS Directive 2011/65/EU Annex II [amended by Directive (EU) 2015/863]. Analysis was performed by GC/MS.

| Analysis | Method (Refer to) | Result (1) (mg/kg) | MDL | RoHS Limit (mg/kg) |
|---|-------------------|--------------------|-----|--------------------|
| DBP (Di-butyl phthalate) (CAS No.: 84-74-2) | (6)* | n.d. | 50 | 1000 |
| BBP (Benzyl butyl phthalate) (CAS No.: 85-68-7) | (6)* | n.d. | 50 | 1000 |
| DEHP (Di-2-ethylhexyl phthalate) (CAS No.: 117-81-7) | (6)* | n.d. | 50 | 1000 |
| DIBP (Di-isobutyl phthalate) (CAS No.: 84-69-5) | (6)* | n.d. | 50 | 1000 |

Test Part Description
Result (1) metal with plating

Note :

- (a) mg/kg = ppm ; 0.1 wt% = 1000 ppm
- (b) n.d. = Not Detected
- (c) MDL = Method Detection Limit
- (d) Test done on client submitted sample

Remarks :

- (1) The maximum permissible limit is quoted from RoHS Directive (EU) 2015/863.
- (2) IEC 62321 series is equivalent to EN 62321 series.
- (3) The restriction of DEHP, BBP, DBP and DIBP shall apply to medical devices, including in vitro medical devices, and monitoring and control instruments, including industrial monitoring and control instruments, from 22 July 2021

Test(s) marked * on this report are not included in the Accreditation Scope.

"Any holder of this document is advised that should client or third party information be supplied with respect to the goods or sample, SGS may, at its discretion, attached or indicate such information to the report but SGS makes no warranties or accepts no liable for the veracity or lack thereof of such Information."

?This document is issued by the Company subject to its General Conditions of Service printed overleaf, available on request or accessible at <http://www.sgs.com/en/Terms-and-Conditions.aspx> and, for electronic format documents, subject to Terms and Conditions for Electronic Documents at <http://www.sgs.com/en/Terms-and-Conditions/Terms-e-Documents.aspx>

Attention is drawn to the limitation of liability, indemnification and jurisdiction issues defined therein. Any holder of this document is advised that information contained hereon reflects the Company's findings at the time of its intervention only and within the limits of Client's instructions, if any. The Company's sole responsibility is to its Client and this document does not exonerate parties to a transaction from exercising all their rights and obligations under the transaction documents. This document cannot be reproduced except in full, without prior written approval of the Company. Any unauthorized alteration, forgery or falsification of the content or appearance of this document is unlawful and offenders may be prosecuted to the fullest extent of the law.?

Unless otherwise stated the results shown in this test report refer only to the sample(s) received and such sample(s) are retained for 30 days only.



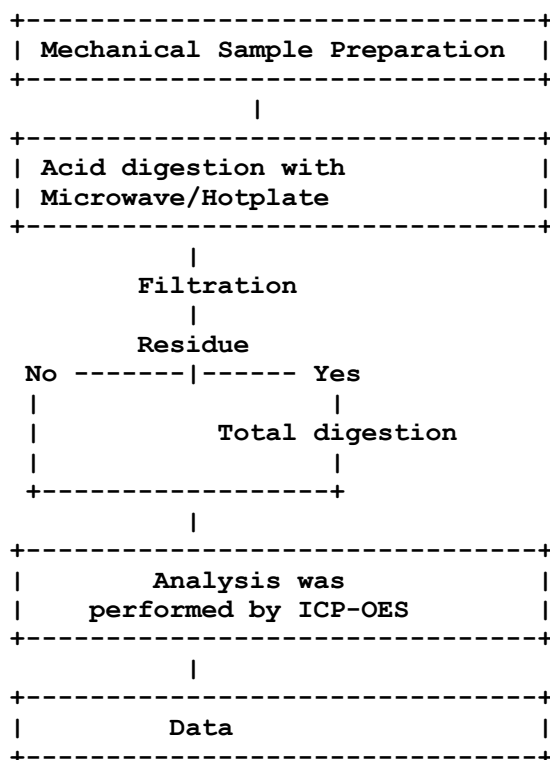
Test Report No. 5896425

Date : 24-May-2024

Page 7 of 11

Flow chart of Pb,Cd,Hg Testing

(Test method : IEC 62321)



"Any holder of this document is advised that should client or third party information be supplied with respect to the goods or sample, SGS may, at its discretion, attached or indicate such information to the report but SGS makes no warranties or accepts no liable for the veracity or lack thereof of such Information."

?This document is issued by the Company subject to its General Conditions of Service printed overleaf, available on request or accessible at <http://www.sgs.com/en/Terms-and-Conditions.aspx> and, for electronic format documents, subject to Terms and Conditions for Electronic Documents at <http://www.sgs.com/en/Terms-and-Conditions/Terms-e-Documents.aspx>

Attention is drawn to the limitation of liability, indemnification and jurisdiction issues defined therein. Any holder of this document is advised that information contained hereon reflects the Company's findings at the time of its intervention only and within the limits of Client's instructions, if any. The Company's sole responsibility is to its Client and this document does not exonerate parties to a transaction from exercising all their rights and obligations under the transaction documents. This document cannot be reproduced except in full, without prior written approval of the Company. Any unauthorized alteration, forgery or falsification of the content or appearance of this document is unlawful and offenders may be prosecuted to the fullest extent of the law.?

Unless otherwise stated the results shown in this test report refer only to the sample(s) received and such sample(s) are retained for 30 days only.



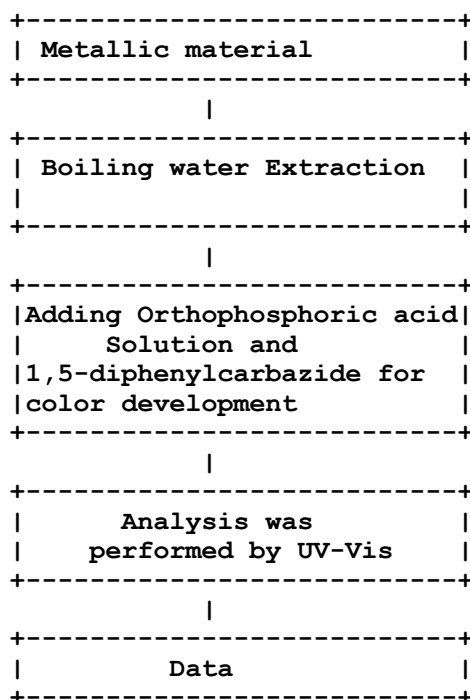
Test Report No. 5896425

Date : 24-May-2024

Page 8 of 11

Flow chart of Hexavalent Chromium Testing

(Test method : IEC 62321)



"Any holder of this document is advised that should client or third party information be supplied with respect to the goods or sample, SGS may, at its discretion, attached or indicate such information to the report but SGS makes no warranties or accepts no liable for the veracity or lack thereof of such Information."

?This document is issued by the Company subject to its General Conditions of Service printed overleaf, available on request or accessible at <http://www.sgs.com/en/Terms-and-Conditions.aspx> and, for electronic format documents, subject to Terms and Conditions for Electronic Documents at <http://www.sgs.com/en/Terms-and-Conditions/Terms-e-Document.aspx>

Attention is drawn to the limitation of liability, indemnification and jurisdiction issues defined therein. Any holder of this document is advised that information contained hereon reflects the Company's findings at the time of its intervention only and within the limits of Client's instructions, if any. The Company's sole responsibility is to its Client and this document does not exonerate parties to a transaction from exercising all their rights and obligations under the transaction documents. This document cannot be reproduced except in full, without prior written approval of the Company. Any unauthorized alteration, forgery or falsification of the content or appearance of this document is unlawful and offenders may be prosecuted to the fullest extent of the law.?

Unless otherwise stated the results shown in this test report refer only to the sample(s) received and such sample(s) are retained for 30 days only.



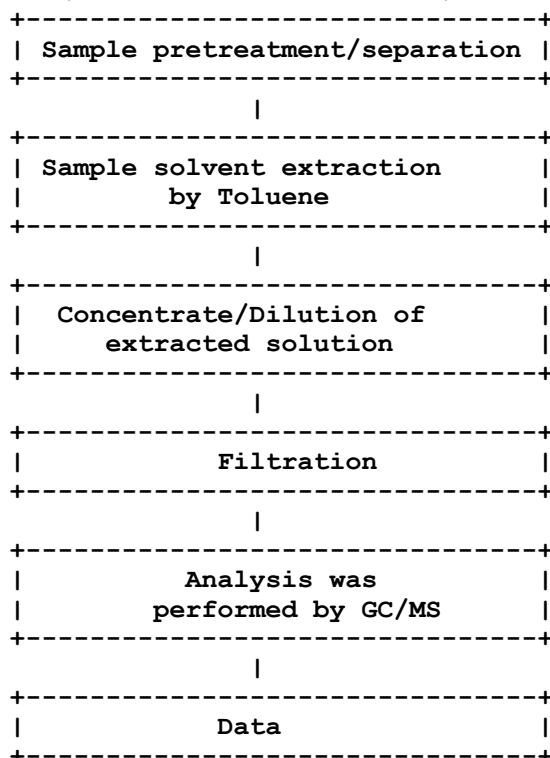
Test Report No. 5896425

Date : 24-May-2024

Page 9 of 11

Flow chart of PBBs, PBDEs Testing

(Test method : IEC 62321)



"Any holder of this document is advised that should client or third party information be supplied with respect to the goods or sample, SGS may, at its discretion, attached or indicate such information to the report but SGS makes no warranties or accepts no liable for the veracity or lack thereof of such Information."

?This document is issued by the Company subject to its General Conditions of Service printed overleaf, available on request or accessible at <http://www.sgs.com/en/Terms-and-Conditions.aspx> and, for electronic format documents, subject to Terms and Conditions for Electronic Documents at <http://www.sgs.com/en/Terms-and-Conditions/Terms-e-Documents.aspx>

Attention is drawn to the limitation of liability, indemnification and jurisdiction issues defined therein. Any holder of this document is advised that information contained hereon reflects the Company's findings at the time of its intervention only and within the limits of Client's instructions, if any. The Company's sole responsibility is to its Client and this document does not exonerate parties to a transaction from exercising all their rights and obligations under the transaction documents. This document cannot be reproduced except in full, without prior written approval of the Company. Any unauthorized alteration, forgery or falsification of the content or appearance of this document is unlawful and offenders may be prosecuted to the fullest extent of the law.?

Unless otherwise stated the results shown in this test report refer only to the sample(s) received and such sample(s) are retained for 30 days only.

5598138



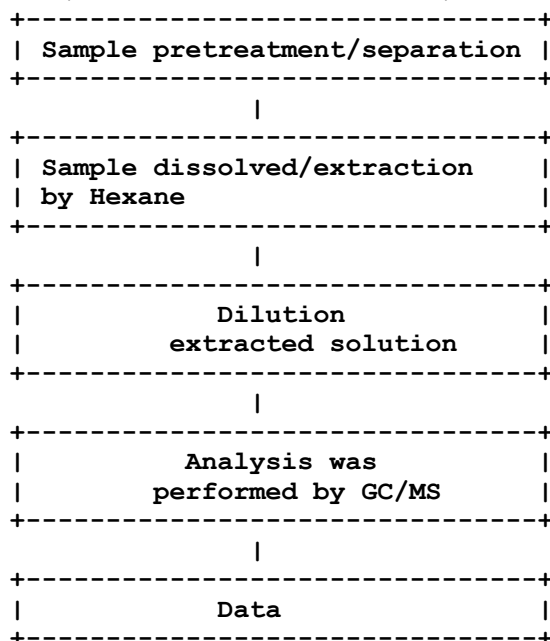
Test Report No. 5896425

Date : 24-May-2024

Page 10 of 11

Flow chart of Phthalates Testing

(Test method : IEC 62321)



"Any holder of this document is advised that should client or third party information be supplied with respect to the goods or sample, SGS may, at its discretion, attached or indicate such information to the report but SGS makes no warranties or accepts no liable for the veracity or lack thereof of such Information."

?This document is issued by the Company subject to its General Conditions of Service printed overleaf, available on request or accessible at <http://www.sgs.com/en/Terms-and-Conditions.aspx> and, for electronic format documents, subject to Terms and Conditions for Electronic Documents at <http://www.sgs.com/en/Terms-and-Conditions/Terms-e-Document.aspx>

Attention is drawn to the limitation of liability, indemnification and jurisdiction issues defined therein. Any holder of this document is advised that information contained hereon reflects the Company's findings at the time of its intervention only and within the limits of Client's instructions, if any. The Company's sole responsibility is to its Client and this document does not exonerate parties to a transaction from exercising all their rights and obligations under the transaction documents. This document cannot be reproduced except in full, without prior written approval of the Company. Any unauthorized alteration, forgery or falsification of the content or appearance of this document is unlawful and offenders may be prosecuted to the fullest extent of the law.?

Unless otherwise stated the results shown in this test report refer only to the sample(s) received and such sample(s) are retained for 30 days only.

Test Report No. 5896425

Date : 24-May-2024

Page 11 of 11

SAMPLE/ATTACHMENT PICTURE



***** End of Report *****

"Any holder of this document is advised that should client or third party information be supplied with respect to the goods or sample, SGS may, at its discretion, attached or indicate such information to the report but SGS makes no warranties or accepts no liable for the veracity or lack thereof of such Information."

?This document is issued by the Company subject to its General Conditions of Service printed overleaf, available on request or accessible at <http://www.sgs.com/en/Terms-and-Conditions.aspx> and, for electronic format documents, subject to Terms and Conditions for Electronic Documents at <http://www.sgs.com/en/Terms-and-Conditions/Terms-e-Documents.aspx>

Attention is drawn to the limitation of liability, indemnification and jurisdiction issues defined therein. Any holder of this document is advised that information contained hereon reflects the Company's findings at the time of its intervention only and within the limits of Client's instructions, if any. The Company's sole responsibility is to its Client and this document does not exonerate parties to a transaction from exercising all their rights and obligations under the transaction documents. This document cannot be reproduced except in full, without prior written approval of the Company. Any unauthorized alteration, forgery or falsification of the content or appearance of this document is unlawful and offenders may be prosecuted to the fullest extent of the law.?

Unless otherwise stated the results shown in this test report refer only to the sample(s) received and such sample(s) are retained for 30 days only.

5598138